

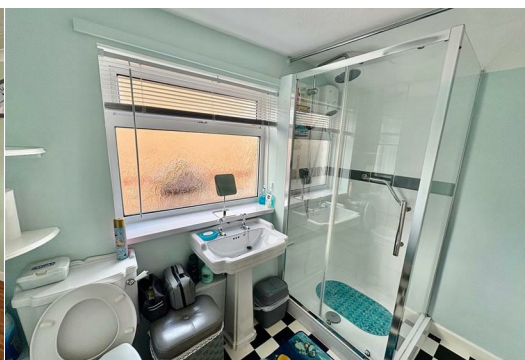


## 34 Eastgate Whittlesey Peterborough PE7 1SE

£875 Per month



Located in the market town of Whittlesey is this two bedroom semi detached home. Accommodation comprises lounge diner, kitchen diner, double glazed, gas central heating, two bedrooms, shower room, garden to rear and garage.



Entrance to:

Lounge/Diner 5.97m (19'7") x 3.66m (12') max Window to front, window to side, wall mounted gas fire, two radiators, telephone point, TV point.

Kitchen/Diner 3.60m (11'10") x 3.48m (11'5") Fitted with a matching range of base and eye level units, sink unit with single drainer, space for fridge and freezer, built-in fan assisted oven, built-in four ring gas hob with extractor hood over, window to side, vinyl flooring, coving to textured ceiling.

First Floor Landing Fitted carpet, loft hatch, door to:

Bedroom 2 3.61m (11'10") x 3.38m (11'1") Window to front, bedroom suite comprising three double wardrobes with hanging rails and shelving, radiator, fitted carpet, coving to textured ceiling.

Shower Room 2.49m (8'2") x 1.64m (5'5") Fitted with three piece suite comprising double shower cubicle, pedestal wash hand basin, low-level WC and heated towel rail, window to side, textured ceiling.

Bedroom 1 3.60m (11'10") max x 3.48m (11'5") Window to side, radiator, fitted carpet, coving to textured ceiling.

Outside  
Enclosed by wooden panelled fence, paved sun patio with seating area, brick garden shed. Garage with window to side and double door.

Area Map



Floor Plans



Energy Efficiency Graph

